

# ASM Series Miniature High Temperature Pressure Transducer



The ASM Series of Miniature High Temperature Pressure Transducers have been designed for high temperature installations in demanding motorsport and automotive applications; ideal for high precision data acquisition or control systems. These transducers can be installed directly onto vehicles, or as part of a test stand or dyno.

Offering a high level of reliability and endurance, the ASM Series is protected against the high vibration, shock and high temperatures found in motorsport. With a modular construction and a programmable amplifier, this provides a large stock available of standard parts for fast delivery.

Pressure ranges are available between 1 to 250 Bar in either Absolute or Sealed Gauge reference. Industry standard 3-wire electrical connections allow configuration with most common ECU's and data logging systems. The ASM Series is race proven in many formulae around the world, offering a cost effective solution for professional engineers.

## Technical Specifications

<b>Pressure Reference</b>	Absolute or Sealed Gauge
<b>Standard Pressure Ranges (Bar)</b>	Low Range: 1, 2, 5, 10, 35 & 50 High Range: 100, 200 & 250
<b>Proof Pressure (Over Range)</b>	300% of Range / 150% of Range
<b>Burst Pressure</b>	>1000% of Range / >300% of Range
<b>Accuracy</b>	±0.08% FS Combined Linearity & Hysteresis (CNLH) ±0.2% FS Combined Linearity & Hysteresis (CNLH)
<b>Thermal Accuracy</b>	<±0.25% FS TEB within Compensated Range Zero ±0.01% FS/°C (Sensitivity ±0.01% of Reading /°C)
<b>Outputs</b>	0.5V to 4.5V (±0.5%)
<b>Supply</b>	5V (±0.5V) Ratiometric or 8-16Vdc (<20mA)
<b>Operating Temperature Range</b>	-40°C to +150°C
<b>Compensated Temperature Range</b>	0°C to +125°C
<b>Bandwidth</b>	0-1000Hz, 5000Hz (Selectable at time of Order)
<b>Construction</b>	Stainless Steel, fully welded
<b>Electrical Connection</b>	100cm 26AWG, 55 Spec Wire + DR25 Sleeve
<b>Process Connection (Thread Sizes)</b>	Please see Part Number Configurator
<b>Protection Class</b>	IP67. Dust tight & water immersion to 1m for 30mins
<b>EMC Protection &amp; Vibration</b>	EN E50082-1 and Mil-Std-810C, Curve L, 20G
<b>Weight</b>	28g (Including Cable)

bf1systems adopts a continuous development program which sometimes necessitates specification changes without notice.

# bf1systems

The Competitive Advantage

## Features

- High Temperature
- Miniature Size
- 1 to 250 Bar Range
- Rugged Construction
- Amplified Output
- High Accuracy

## Applications

- Coolant
- Brakes
- Water
- Boost
- Fuel
- Oil

## Contact Us:

bf1systems  
Unit 13 Springfield Business  
Park  
Priest Court  
Grantham  
Lincolnshire  
NG31 7FZ  
United Kingdom

+44 (0)1476 568057  
sales@bf1systems.com

# Part Number Configuration

**Pressure Reference**

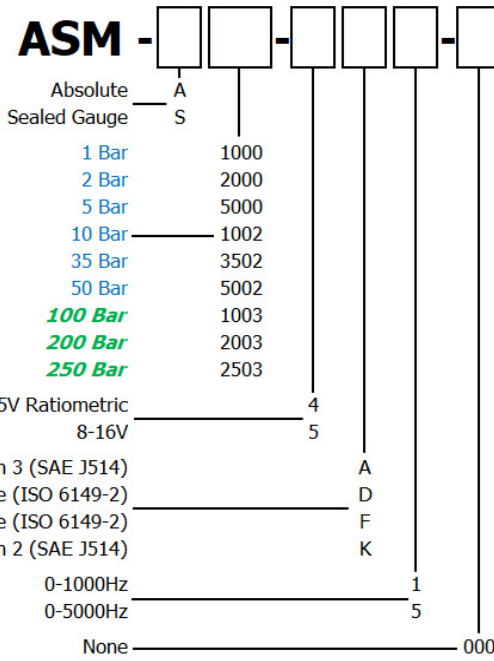
**Pressure Range**

**Supply Voltage**

**Process Connection**

**Bandwidth**

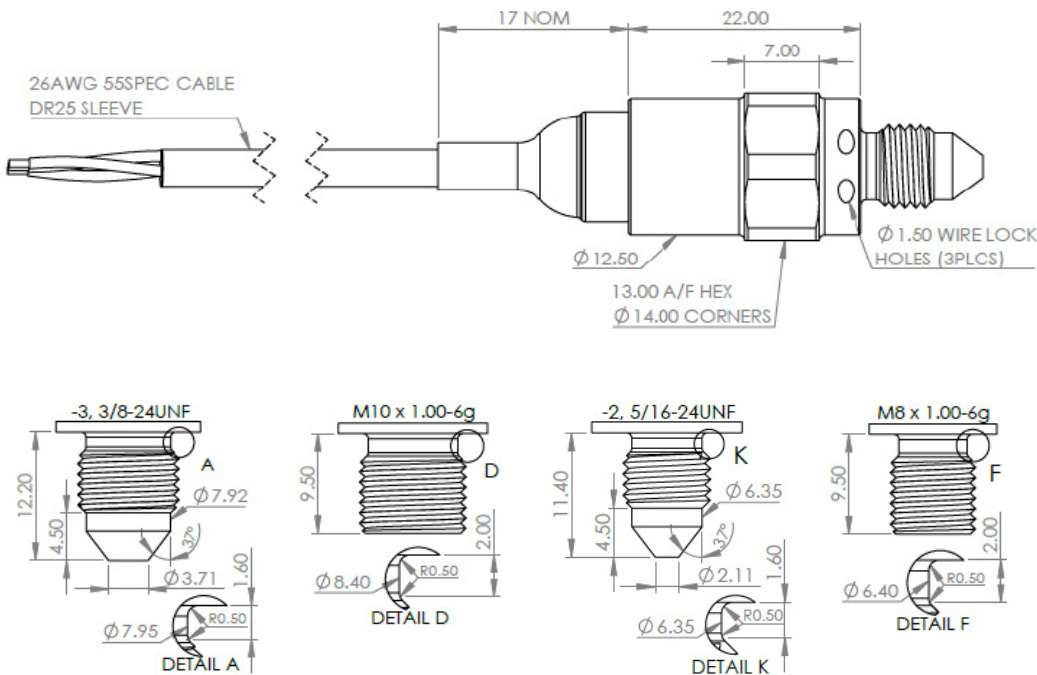
**Special Code**



**Features**

- High Temperature
- Miniature Size
- 1 to 250 Bar Range
- Rugged Construction
- Amplified Output
- High Accuracy

# Mechanical Details



**Applications**

- Coolant
- Brakes
- Water
- Boost
- Fuel
- Oil

# Connection Details

+VE Supply	0V Supply	Signal
Red	Black	White

**Contact Us:**

bf1systems  
 Unit 13 Springfield Business Park  
 Priest Court  
 Grantham  
 Lincolnshire  
 NG31 7FZ  
 United Kingdom

+44 (0)1476 568057  
 sales@bf1systems.com