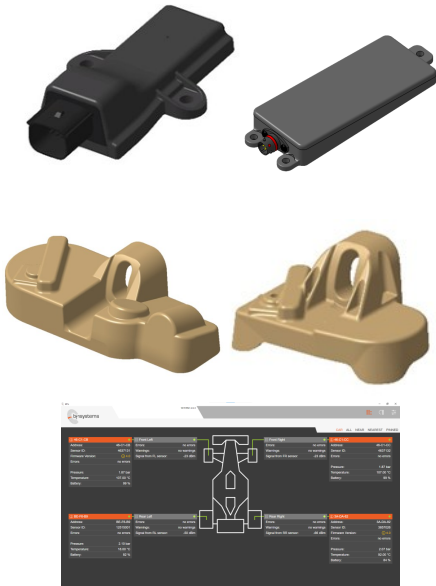


Tyre Pressure & Temperature Monitoring System

System Features



- **Fit & Forget functionality**, including the **fastest ever sensor learning** which works on all car types including open wheel race cars!
- **Global Certification** of 2.4GHz Radio Frequency means 1SYSTEM® can be used around the world without having to change components
- **Certified for use in multiple countries** including; USA , Europe, UK , Canada , Japan, China, Brazil, Australia & many more.
- **Distributed system architecture** means only four chassis mounted devices
- **Tyre Pressure & Temperature** data from the wheel sensors, plus multiple low-pressure warning are provided via the high speed CAN bus connection
- **Suitable for all race series**, ranging from GTE, GT3 & GT4, through to Indycar, F2, F3, LMH, LMDh, LMP2, TCR, WRC and Dakar
- **Multi-level security protocols** provides unparalleled data privacy preventing your competitors from seeing your tyre data
- **Off car sensor monitoring** via new App removing the requirement for separate hand-held tools

System Benefits & Overview

- **Learning or Positioned System Functionality**
 - Depending on application system can be run either as positioned system (with between one and four ECU Antennas on the vehicle) or as a learning system with four ECU Antennas.
- **Fit and Forget Learning Functionality**
 - Can be run on open wheel race cars!
 - ECU Antenna will automatically detect which sensors are fitted to the car, even when the car is stationary
 - System starts reporting tyre data as soon as the wheel sensors are learned, providing data before the car leaves the box
 - Once fitted, no user intervention is required with no need to manually assign sensors to specific corners on any car type
 - Automatic check of sensors when vehicle starts moving to filter out any non-moving wheels (e.g. spare wheels fitted to the car)
 - System automatically learns new sensors fitted to the car, meaning no user interaction is required
- **Low Pressure Warning Algorithms**
 - The low pressure warnings are calculated using bf1systems pressure loss algorithms, refined over many years in multiple formulae
 - Algorithms will detect small losses of pressure and provide warnings, often before the driver will notice them
 - Algorithms derived to prevent false warnings which could occur when tyre pressures drop, for example when a safety car is deployed
- **Device & System management**
 - Windows based App provides enhanced functionality, replacing the need for dedicated hand-held TPMS tools
 - Supplementary device management and configuration is carried out via our proprietary 1SYSTEM® software, using your Windows laptop or tablet

Technical Centre | Owen Road | Diss | Norfolk | England | IP22 4ER

bf1systems Limited Registered Office: As above
Registered in England No. 2902036 VAT Registration No. GB 751 0890 38

www.bf1systems.com



TPMS Wheel Sensor



Wheel Sensor Features

- 1SYSTEM® TPMS wheel sensor is available in three configurations, Lite, Pro and Pro Plus
- bf1systems lightest ever wheel sensor, weighing just 15g
- High accuracy, high data rates and high temperature performance
- 2.4GHz frequency transmission legal worldwide

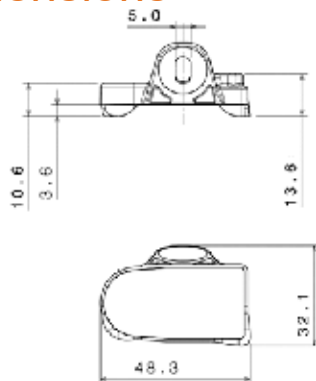
Wheel Sensor Configuration Options

	Part Number	Transmission Rate	Pressure Resolution
TPMS Lite	F1-100-1800-002	0.33Hz	25mbar/bit
	F1-XXX-1800-002		
TPMS Pro	F1-100-1800-003	1Hz	12.5mbar/bit
	F1-XXX-1800-003		

Wheel Sensor Specification

Product	Model Range	TP24G1WE
	Dimensions	48 x 32 x 23 mm
	Weight	15 grams
	Housing Material	PEEK
Pressure	Pressure Range	0 - 5.1175 bar gauge
	Pressure Accuracy (mbar)	± 25
Temperature	Internal Temp Measurement	-40 - 150 °C
	Internal Temp Accuracy	±1 °C
	Internal Temp Resolution	1 °C/bit
Environment	Operating Temp Range	+15 to +125 °C (excursions to 150°C < 24hrs over lifetime)
	Max. Centripetal Acceleration	4700 G

Dimensions



Benefits

- Compatible with same wide range of valves as used previously by bf1systems to suit most wheel rims
- Light weight of 15g means minimal balancing weights required on wheel rim
- Sensors can be interrogated by 1SYSTEM® Windows App which replaces dedicated hand-held tools
- Tested to g loading of over 4700g making it suitable for the highest speed applications

Technical Centre | Owen Road | Diss | Norfolk | England | IP22 4ER

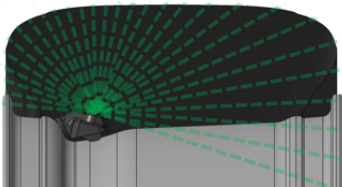
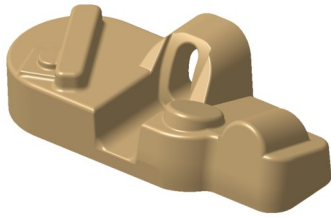
bf1systems Limited Registered Office: As above
Registered in England No. 2902036 VAT Registration No. GB 751 0890 38

www.bf1systems.com



IRTPTMS Wheel Sensor

Features



- Market leading 200° Field of View, providing measurements across entire Tyre Wall
- ECU and wireless sensor configuration with Windows software application
- Off car device management using Windows software application
- Interchangeability on car, TPMS and IRTPTMS use same chassis mounted ECU
- High accuracy, High temperature performance
- Multi-Level Security features available for Manufacturers, Teams, Series and Cars
- Enhanced bf1 algorithms refined over many years in Motorsport sector

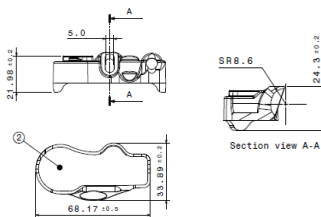
Wheel Sensor Configuration Options

	Order Code / Part No.	Transmission Rate (IR Temp)	Transmission Rate (Pressure & Temp)	Pressure Resolution	Number of IR Measurement Points
IRTPTMS	F1-100-1850-001	1Hz	1Hz	12.5mbar/bit	8
	F1-XXX-1850-001				
IRTPTMS	F1-100-1850-002	1Hz	1Hz	5mbar/bit	28
	F1-XXX-1850-002				

Wheel Sensor Specification

Product	Model Range	IR24G1WE
	Dimensions	64 x 32 x 23 mm
	Weight	33 grams (without valve fitted)
	Housing Material	PEEK
Inner Tyre Carcass Measurement	Field of View	200°
	Pixel Configuration Lite	Lite 8 from 28 (configurable positions via 1SYSTEM Application)
	Pixel Configuration Pro	Pro 28
	IR Temperature Range	-40 to 215 °C
	IR Temperature Resolution	0.25°C/bit
Pressure	IR Temperature Accuracy	± 2.5 °
	Pressure Range	0 - 5.1175 bar gauge
	Pressure Accuracy (mbar)	± 25
Temperature	Internal Measurement	0 - 150 °C
	Internal Accuracy	±1 °C
	Internal Resolution	1 °C / bit
Environment	Operating Temp Range	0 to +125 °C (excursions to 150°C < 24hrs over lifetime)
	Max Centripetal Acceleration	4700 G

Dimensions



Benefits

- High number of temperature measurement points provides comprehensive set of data to allow for detailed tyre behavior analysis
- Wide Field of View allows for non-contact rim temperature measurement
- Compatible with same wide range of valves as used previously by bf1systems to suit most wheel rims
- Sensors can be interrogated by 1SYSTEM® Windows App which replaces dedicated hand-held tools

Technical Centre | Owen Road | Diss | Norfolk | England | IP22 4ER

bf1systems Limited Registered Office: As above
Registered in England No. 2902036 WAT Registration No. GB 751 0890 38

www.bf1systems.com



Lite ECU



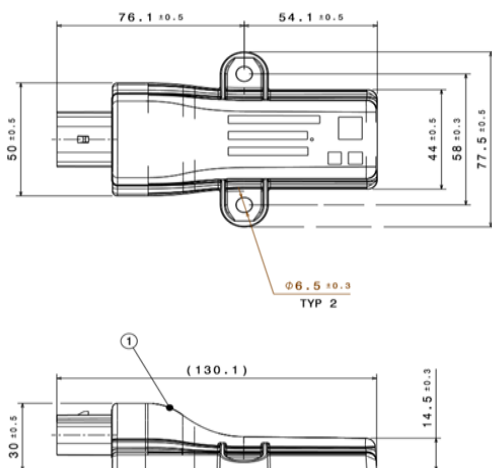
Features

- Simple, efficient installation requires only four components mounted on the chassis
- Highly tuned learning algorithms allows for learning system to work on all car types including open wheel race cars
- Robust system design allows for ECU to be installed in protected locations around the wheel, preventing damage to parts

Lite ECU Specification

Product	Order Code / Part Number	F1-100-1799-002 or F1-XXX-1799-002 (non FIA Secure TPMS) F1-100-1799-012 or F1-XXX-1799-012 (FIA Secure TPMS)
	bf1 Model Designation	BF24G1EC
	Weight	80g
Environment	IP Protection Rating	6K7
	Operating Temperature Range	0 to +105 °C
Electrical	Power Supply	+12V switched ignition
	Operating Voltage Range	6.5 - 18 V
	Max. current consumption	40 mA
ECU Interface	CAN Bus Data Rate	1Mbaud
	Mating Connector	Molex MX150 Series P/N 334724801 Female
RF	RF Frequency Range	2.4 - 2.48 GHz
	Antenna Type	integrated

Dimensions



Lite ECU Benefits

- Distributed system architecture means only +12V, 0V, CANH and CANL connections are required for each ECU Antenna on the car, simplifying car wiring
- High sensitivity receiver means ECU Antenna can be located in protected areas around the wheel reducing the likelihood of damage to parts
- Advanced learning algorithms provide the fastest ever learning of sensors when fitted to the vehicle
- ECU Antenna is compatible with both TPMS and IRTPTMS wheel sensors, meaning no need to change or reprogram chassis mounted hardware to run different sensor types, just fit and drive

Technical Centre | Owen Road | Diss | Norfolk | England | IP22 4ER

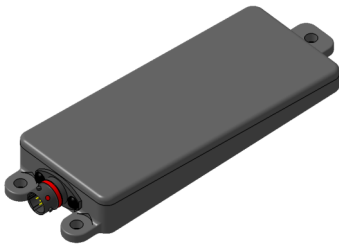
bf1systems Limited Registered Office: As above
Registered in England No. 2902036 WAT Registration No. GB 751 0890 38

www.bf1systems.com



ECU Pro

Features

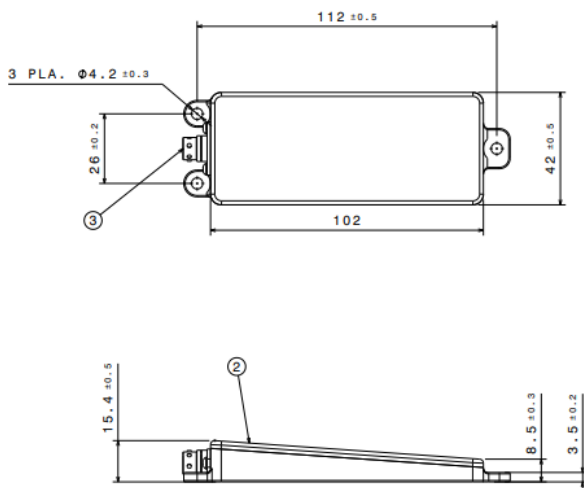


- Compact, lightweight package with ASX connector for motorsport applications
- Ability to use in learning or positioned mode for sensor detection
- Learning mode requires four ECU Pros mounted on the vehicle
- Positioned mode can be run with between 1 & 4 ECU Pros mounted on the vehicle
- Highly tuned learning algorithms allows for learning system to work on all car types

Specification

Product	Order Code / Part Number	F1-100-1799-003 or F1-XXX-1799-003 (non FIA Secure TPMS) F1-100-1799-013 or F1-XXX-1799-013 (FIA Secure TPMS)
	bf1 Model Designation	BF24G1EC
	Weight	55g
Environment	IP Protection Rating	6K7
	Operating Temperature Range	0 to +105 °C
Electrical	Power Supply	+12V switched ignition
	Operating Voltage Range	6.5 - 18 V
	Max. current consumption	40 mA
ECU Interface	CAN Bus Data Rate	1M baud
	Connector	TE Connectivity ASX002-06PN-HE
	Mating Connector	TE Connectivity ASX602-06SN-HE
RF	RF Frequency Range	2.4 - 2.48 GHz
	Antenna Type	integrated

Dimensions



Technical Centre | Owen Road | Diss | Norfolk | England | IP22 4ER

bf1systems Limited Registered Office: As above
Registered in England No. 2902036 VAT Registration No. GB 751 0890 38

www.bf1systems.com

Pro ECU Benefits

- Small, lightweight, rugged design makes this ECU more suitable for harsher installations or where space is at a premium.
- Distributed system architecture means only +12V, 0V, CANH and CANL connections are required for each ECU Antenna on the car, simplifying car wiring
- High sensitivity receiver means ECU Antenna can be located in protected areas around the wheel reducing the likelihood of damage to parts
- ECU Antenna is compatible with both TPMS and IRTPTMS wheel sensors, meaning no need to change or reprogram chassis mounted hardware to run different sensor types, just fit and drive





Features

- Enhanced communications to 1SYSTEM wireless sensors
- Compatible with 1SYSTEM Application
- Faster firmware updates than using in-built Bluetooth hardware or generic USB dongles
- Increased communication range

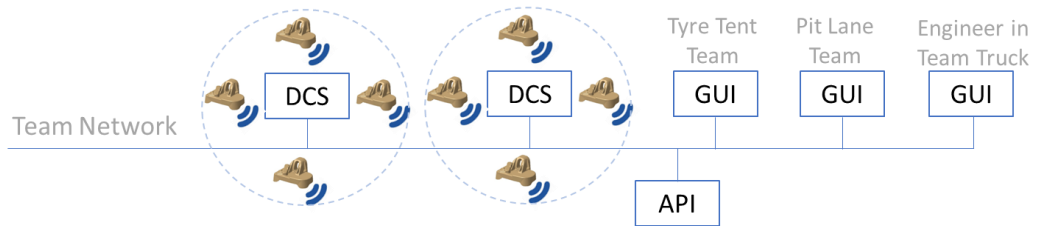
1SYSTEM Garage Monitoring System (GMS)

Features

- Access to live wheel sensor data over a wide area, utilizing existing team network (wired and wireless)
- DCS nodes can be added wherever tyres are stored to ensure accurate monitoring
- Supplied GUI provides visual display of live tyre set data on computer monitors, tablets and phones.
- User configurable tyre types, and type specific High/Low Temperature & Pressure warnings.
- API available to allow integration of GMS data into own software



Example Network Setup:



Product overview

Part Number	Part Licence Type	Description
F1-100-1851-010	1SYSTEM GMS API	API collates and decrypts data from DCS nodes and sends the combined data stream to clients on the same network, to provide data to pit wall, garage, tyre tent and team truck as examples.
F1-100-1851-011	1SYSTEM GMS DCS (Additional Node)	DCS is a Windows service that runs in the background and will happily run on a cost-effective Windows mini-PC. DCS is responsible for receiving data transmitted from wheel sensors, utilizing the Bluetooth receiver on/in the PC.
F1-100-1851-012	1SYSTEM GMS GUI	A freely supplied web-based GUI is provided with GMS which runs on computers and phones. The GUI interfaces with API to provide graphical representation of data.

Technical Centre | Owen Road | Diss | Norfolk | England | IP22 4ER

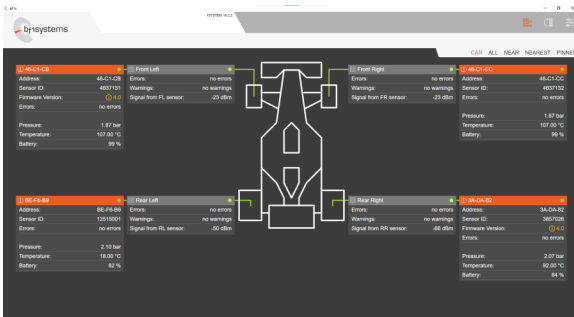
bf1systems Limited Registered Office: As above
Registered in England No. 2902036 VAT Registration No. GB 751 0890 38

www.bf1systems.com



Application Software

Application Features



- Management of your Tyre Monitoring devices in the 21st Century!
- Removes the need to trigger wheels to identify Sensors!
- UX Enhancements driven from customer feedback
- UX developed specifically for Motorsport use cases, including Tyre Engineer, Vehicle Engineer and Development Engineer functions.
- Use the 2.4GHz wireless capability to read/write directly with Sensing devices using your tablet or laptop

All NEW Software!

bf1systems has developed a NEW Windows based application software for the management and configuration of all your 1SYSTEM® devices

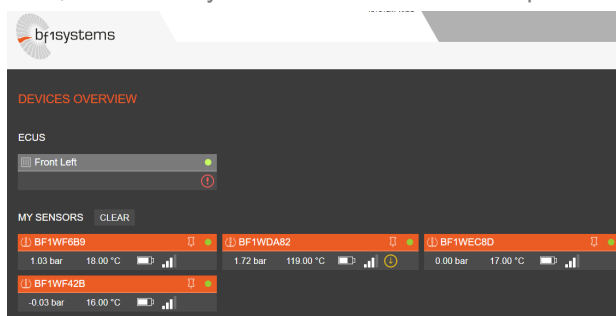
1SYSTEM® App provides fast, quick, simple and efficient hand-held testing capabilities for wheel sensors, WITHOUT the need for a dedicated TPMS hand-held unit

User configurable security means your tyre data is more secure than ever before

Feature Summary

Application Feature	1SYSTEM® Core	1SYSTEM® Core Plus
Licence	Free Download	Annual Licence
ECU Settings & Warnings Configuration	Yes *only when Connected to Car	Yes
ECU & Sensor Firmware Update	Yes *only when Connected to Car	Yes
ECU & Sensor Security (Series, Team, Car)	No	Yes
Sensor Data Display	Yes *only when Connected to Car	Yes
Sensor Configuration	No	Yes
Find Nearest Sensor	No	Yes
Find Nearest 4 Sensors	No	Yes
Pin Nearest Sensors	No	Yes
Tyre Set Management	No	Yes
Project Configuration (Vehicle Management)	No	Yes

1SYSTEM® Application software has many more features to ensure management of your bf1 products is simple, efficient, user friendly and consistent across all products in our evolving 1SYSTEM® range of 2.4GHz devices.



Technical Centre | Owen Road | Diss | Norfolk | England | IP22 4ER

bf1systems Limited Registered Office: As above
Registered in England No. 2902036 VAT Registration No. GB 751 0890 38

www.bf1systems.com



Certification & Availability

Product Certification

- The 1SYSTEM® range is certified in multiple countries, with more being tested, validated and certified each month.
- Further countries may be added via commercial agreement, please enquire if the country required is not listed.

Country	1SYSTEM® ECU G1	1SYSTEM® TPMS Wheel Sensor	1SYSTEM® IRTPTMS Wheel Sensor
Australia	Certified	Certified	Certified
Bahrain	Certified	Certified	Certified
Belize	Certified	Certified	Certified
Brazil	Certified	Certified	Certified
Canada	Certified	Certified	Certified
China	In Process	In Process	In Process
EU	Certified	Certified	Certified
Hong Kong	Certified	Certified	Certified
Japan	Certified	Certified	Certified
Malaysia	Certified	Certified	Certified
New Zealand	Certified	Certified	Certified
Qatar	Certified	Certified	Certified
Saudi Arabia	Not Required (This Device is not under CITC authorisation)	Not Required (This Device is not under CITC authorisation)	Not Required (This Device is not under CITC authorisation)
Singapore	Certified	Certified	Certified
Thailand	Certified	Certified	Certified
UAE	Certified	Certified	Certified
UK	Certified	Certified	Certified
USA	Certified	Certified	Certified

QuickScan

PN: F1-100-1851-020—1SYSTEM QuickScan Software Activation



1SYSTEM QuickScan allows engineers and technicians to quickly read and report the status and data of individual tyre sensors after fitting. The lifetime software licence is deployed via the 1SYSTEM App to a readily available, cost effective, 3rd party hand-held hardware device, which has an in-built rechargeable battery.

The unit receives data from the nearest wheel sensor (TPMS or IRTPTMS) and displays the following information:

- Serial Number
- Remaining Battery Life
- Pressure
- Temperature
- Signal Strength
- Error Codes
- Position
- Set Number
- Firmware Version
- Security Code

Features

- Ideal for trackside and pit diagnostics due to pocket sized hardware.
- Always ready for use with a long-life battery and fast USB-C charging via the included charging base.
- Readable in all conditions. Backlit digital display with light/dark modes.
- Real-time readings with selectable Metric or Imperial units.

Important Information

- 3rd party hardware device is **NOT provided by bf1systems** and must be purchased directly from a local stockist.
- A lifetime licence for the QuickScan application is purchased from bf1systems using Part No: F1-100-1851-020.
- An active 1SYSTEM Core Plus Application Licence is required to deploy a QuickScan licence to the 3rd party hardware device.



Product Overview

Feature	Detail
Compatible Hardware	M5Stack Fire v2.7, SKU: K007-V27
Sensor Compatibility	TPMS and IRTPTMS Wheel Sensors
Size	54.0 x 54.0 x 28.6mm
Power Source	Rechargeable battery, USB-C charging
Battery Life	Up to 4 hours use
Display	2.0"@320 x 240 TFT, max brightness 853nit

Technical Centre | Owen Road | Diss | Norfolk | England | IP22 4ER

bf1systems Limited Registered Office: As above
Registered in England No. 2902036 VAT Registration No. GB 751 0890 38

www.bf1systems.com

