

NTC SERIES NTC1 FLUID TEMPERATURE SENSOR



The NTC1 Series of High Performance Temperature Sensors are designed to measure the temperatures of all types of fluid in demanding motorsport and automotive testing applications.

The sensing element can be either: PT1000 or an NTC 3K Ω Thermistor; calibration of each is well defined and can be installed into most common ECUs and data logging systems.

Construction choice is either aluminium, brass or stainless steel. With standard motorsports cable and sleeve this will protect from the harsh environments around the vehicle.

The NTC1 Series are race proven in many formulae around the world and offer a reliable and robust solution for professional engineers.

TECHNICAL SPECIFICATIONS

Ranges (FS)	-30°C to +150°C
Accuracy	< \pm 1°C
Response Time	<10 Seconds
Seal	Viton O-Ring
Sensor Type	NTC 3K Ω or PT1000 class A
Construction	Brass, Aluminium or Stainless Steel
Electrical Connection	100cm, 26AWG 55Spec + DR25 Sleeve
Mechanical Connection	Please See Part Number Configurator
Protection Class	IP67
Weight (Excluding Cable)	Brass, Stainless steel: 20g Aluminium: 3g

	NTC3K Ω	PT1000
Temp °C	Output Ω	Output Ω
-30	53100.00	882.20
-20	29121.00	921.60
-10	16599.00	960.90
0	9795.00	1000.00
10	5970.00	1039.00
20	3747.00	1077.90
25	3000.00	1097.30
30	2417.10	1116.70
40	1598.10	1155.40
50	1080.90	1194.00
60	746.40	1232.40
70	525.60	1270.80
80	376.50	1309.00
90	274.59	1347.10
100	203.46	1385.10
110	153.09	1422.90
120	116.79	1460.70
130	90.28	1498.30
140	70.58	1535.80
150	55.79	1573.30

KA Sensors adopts a continuous development program which Sometimes necessitates specification changes without notice.

Sensors For Motorsport

Features

- Miniature Size
- -30°C to +150°C
- PT1000 or NTC
- Rugged Construction

Applications

- Coolant
- Water
- Brake
- Fuel
- Oil

kasensors.com

sales@kasensors.com

NTC1 08.22

PART NUMBER CONFIGURATOR

Mounting Thread

M6 x 1 Male - Not in Brass Construction
 M8 x 1 Male (ISO6149-2)
 M10 x 1 Male (ISO6149-2)
 M12 x 1.50 Male (ISO6149-2) - Not in Brass Construction

Construction

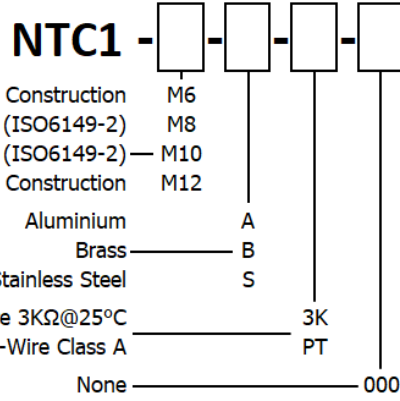
Aluminium
 Brass
 Stainless Steel

Sensor Type

NTC, 2-Wire 3K Ω @25 $^{\circ}$ C
 PT1000, 2-Wire Class A

Special Code

None

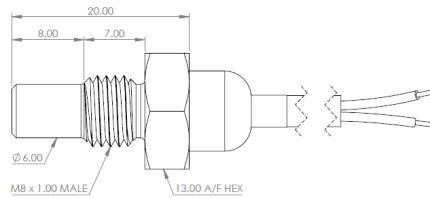
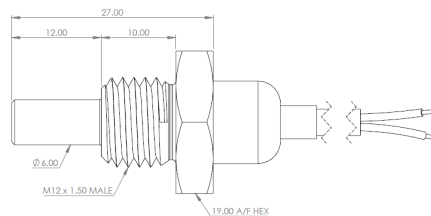
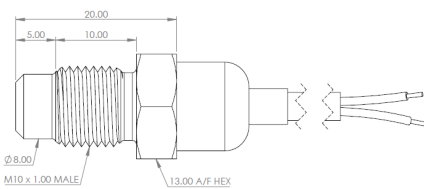
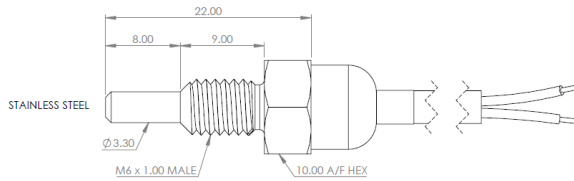
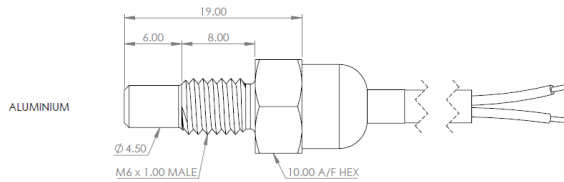


*Sense
 Analyse
 Control*

Services for:

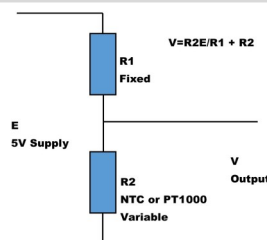
- Data Logging
- Telemetry
- Controls
- Wiring

MECHANICAL DETAILS



CONNECTION DETAILS

Output	Output
Red	White



kasensors.com
 sales@kasensors.com

NTC1 08.22