

KH SERIES KH31 & 32 FEMALE ROTARY POSITION SENSOR



The KH31/32 Series of Female 1 or 2 Channel Rotary Position Sensors are designed to withstand the harsh environments of motorsport and automotive testing applications.

By using a proven 'Hall Effect' technology, the KH31/32 offers high performance and reliability at temperatures up to +150°C. Alternatively, it is capable of operational excellence in cold environments down to -40°C.

With a small and lightweight 22.5mm diameter body and standard size 32mm PCD Flange Mounting, the KH31/32 Sensor is designed for use on throttle bodies with an 8mm D Type Shaft; other installations include: gearbox and pedal position.

This IP67 rated sensor is available with either Single (3 wire) or Dual (6 wire) outputs.

TECHNICAL SPECIFICATIONS

Electrical Angles (Degrees)	20° to 360° in 1° Increments. Standard Angles: 30°, 60°, 120°, 240° & 360°
Supply	5V DC Regulated
Output	Please See Part Number Configurator For Options
Output Centre Position (Voltage)	2.5V When Keyway Is In Line With The Cable Exit
Resolution	12 Bit
Accuracy, Linearity	±0.1%
Accuracy, Hysteresis	<0.1°
Update Rate	5KHz
Mechanical Life	> 25 Million Cycles at Max 150RPM
Operating Temperature Range	-40°C to +150°C
Housing Material	Aluminium, PEEK
Shaft Material	Aluminium
Track Technology	Hall Effect
Electrical Connection	50cm 26AWG, 55 Spec, FDR 25 Sleeve
Protection Class	IP67
Weight	20g

KA Sensors adopts a continuous development program which sometimes necessitates specification changes without notice.

Sensors For Motorsport

Features

- Compact Design
- Excellent Linearity
- High Temperature
- Lightweight
- IP67 Standard Sealing
- Rugged Construction

Applications

- Throttle Position
- Steering Angle
- Pedal Position
- Gear Position
- Aero Surfaces
- Actuators

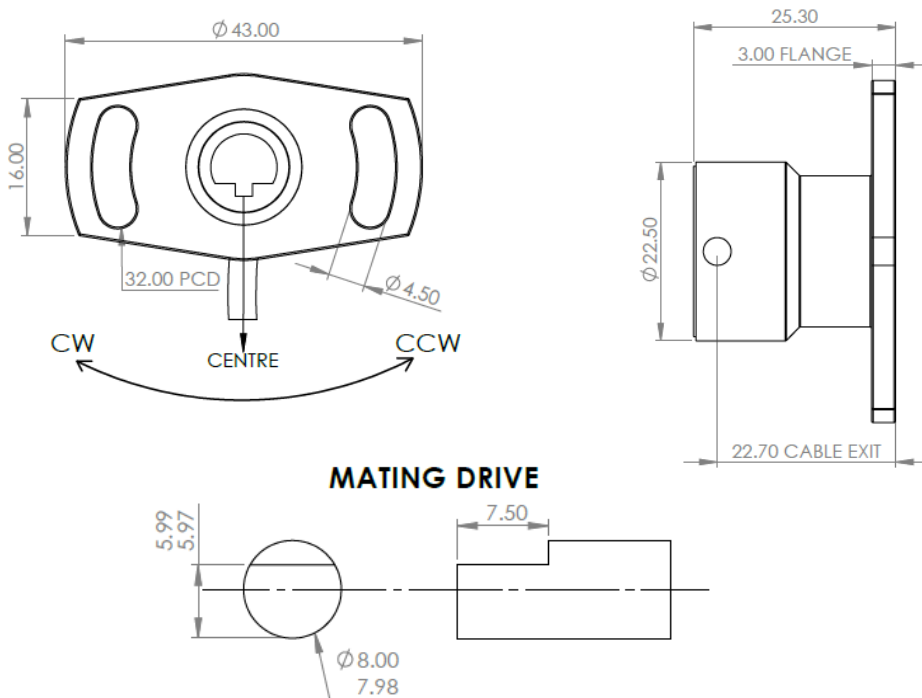
kasensors.com
 sales@kasensors.com

KH31/32 10.22

PART NUMBER CONFIGURATOR

		KH	□	-	□	-	□	-	□	-	□	-	□	-	□
Series	Female Channel 1		31												
	Female Channel 2		32												
Channel 1 Range, CW View from Shaft	30° (Degrees)								030						
	60° (Degrees)								060						
	120° (Degrees)								120						
	240° (Degrees)								240						
	360° (Degrees)								360						
	Insert Required Range in Place of XXX°								XXX						
Channel 2 Range CCW View from Shaft	30° (Degrees)												030		
	60° (Degrees)												060		
	120° (Degrees)												120		
	240° (Degrees)												240		
	360° (Degrees)												360		
	Insert Required Range in Place of XXX°												XXX		
Output Signal	0.5 to 4.5V (2.5V Center)														AA
	CH1 = 0.5 to 4.5V. CH2 = 4.5 to 0.5V (Opposite)														AB
	Custom Range, Insert Range Required														XX
Special Code	None														000

MECHANICAL DETAILS



CONNECTION DETAILS

	+Ve Supply	0V Supply	Signal
Single Output	Red	Black	Yellow
Dual Output	Brown	Blue	White

*Sense
Analyse
Control*

Services for:

- Data Logging
- Telemetry
- Controls
- Wiring

Contact us

KA Sensors Ltd
Unit 13, Priest Court
Springfield Business Park
Grantham
United Kingdom
NG31 7FZ

kasensors.com
sales@kasensors.com

KH31/32 10.22