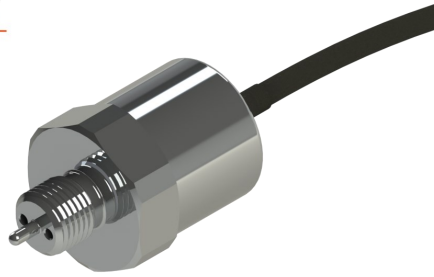


ASLT SERIES STANDARD PRESSURE & TEMPERATURE TRANSDUCER



Sense
Analyse
Control

The ASLT Series of Standard Pressure and Temperature Sensors have been designed for the detection of fluid and air pressures in demanding motorsport and automotive applications; ideal for high precision data acquisition or control systems. These transducers can also be installed directly onto vehicles, or as part of a test stand or dyno.

Offering a high level of reliability and endurance the ASLT is protected against the high vibration, shock and high temperatures found in motorsport. With a modular construction and programmable amplifier, this provides a large stock available of standard parts for fast delivery.

Pressure ranges are available between 2 to 200 Bar in either Absolute or Sealed Gauge reference. The industry standard 3-wire electrical connections for the Pressure and 2-wire for the Temperature, allow configuration with most common ECU's and data logging systems. The ASLT Series is race proven in many formula around the world, offering a cost effective solution for professional engineers.

Features

- Built-In Temp. Sensor
- Rugged Construction
- 2 to 200 Bar Range
- Amplified Output
- $\pm 0.5\%$ Accuracy

TECHNICAL SPECIFICATIONS

Pressure Reference	Absolute or Sealed Gauge
Standard Pressure Ranges (Bar)	2, 10, 35, 100 & 200
Proof Pressure (Over range)	150% of Range
Burst Pressure	>300% of Range
Accuracy	$\pm 0.5\%$ FS Combined Linearity & Hysteresis (CNLH)
Thermal Accuracy	Zero $\pm 0.04\%$ FS/ $^{\circ}$ C (Sensitivity $\pm 0.04\%$ of Reading / $^{\circ}$ C)
Outputs	Press: 0.5V to 4.5V ($\pm 0.5\%$) Temp: NTC, 2-Wire 10K Ω @25 $^{\circ}$ C or 2-Wire PT1000
Supply	5V - 40V d.c. (Less than 20mA consumption)
Operating Temperature Range	-20 $^{\circ}$ C to +135 $^{\circ}$ C
Compensated Temperature Range	0 $^{\circ}$ C to +125 $^{\circ}$ C
Construction	Stainless Steel with either EPDM or Viton internal O-rings
Electrical Connection	100cm 26AWG, 55Spec Wire + DR25 Sleeve
Process Connection (Thread Size)	Please see Part Number Configurator
Protection Class	IP67. Dust tight & water immersion to 1m for 30mins
EMC Protection & Vibration	EN E50082-1 and Mil-Std-810C, Curve L, 20G
Weight	54g (Including Cable)

Applications

- Coolant
- Brakes
- Water
- Boost
- Fuel
- Oil

bf1systems.com

sales@kasensors.com

KA Sensors adopts a continuous development program which sometimes necessitates specification changes without notice.

PRESSURE | TEMPERATURE | FORCE | TORQUE | POSITION | SPEED | ACCELERATION | GYRO

ASLT
KA015P-DS (rev1)

PART NUMBER CONFIGURATOR

Pressure Reference

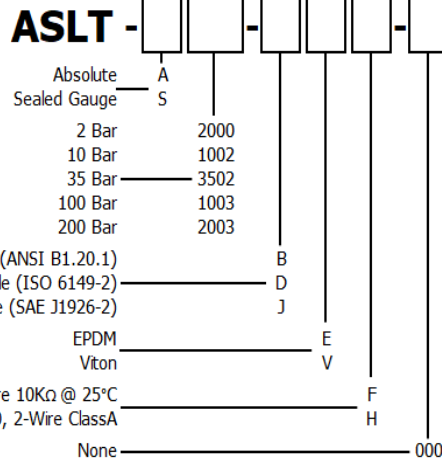
Pressure Range

Process Connection

O-Ring Material (Internal)

Temperature Sensor Type

Special Code

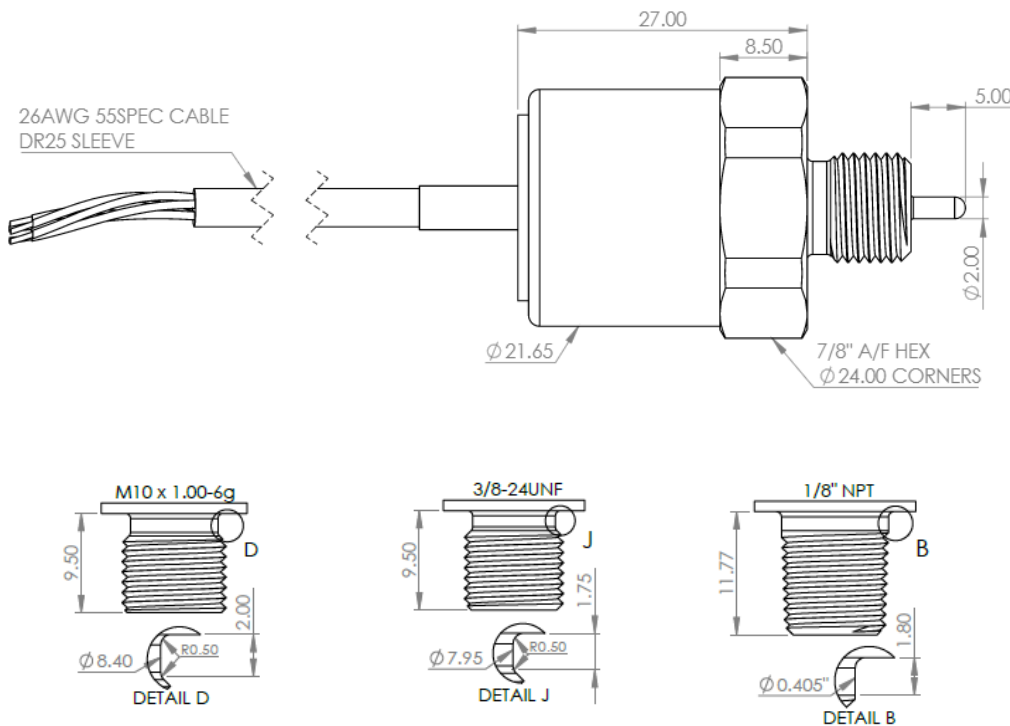


*Sense
Analyse
Control*

Services for:

- Data Logging
- Telemetry
- Controls
- Wiring

MECHANICAL DETAILS



Contact us

KA Sensors Ltd
 Unit 14 & 15
 The Old Malthouse
 Springfield Road
 Grantham
 Lincolnshire
 United Kingdom
 NG31 7BG

bf1systems.com
 sales@kasensors.com

CONNECTION DETAILS

+Ve Supply	0V Supply	Output (P)	Output (T)	Output (T)
Red	Black	White	Blue	Green

ASLT
KA015P-DS (rev1)

TEMPERATURE DETAILS

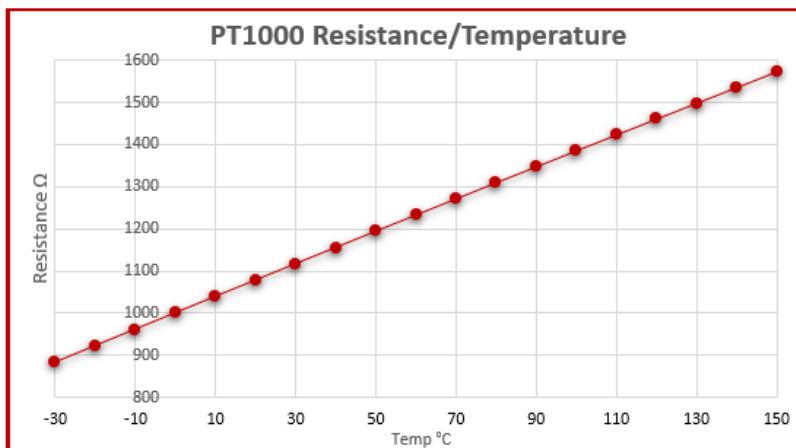
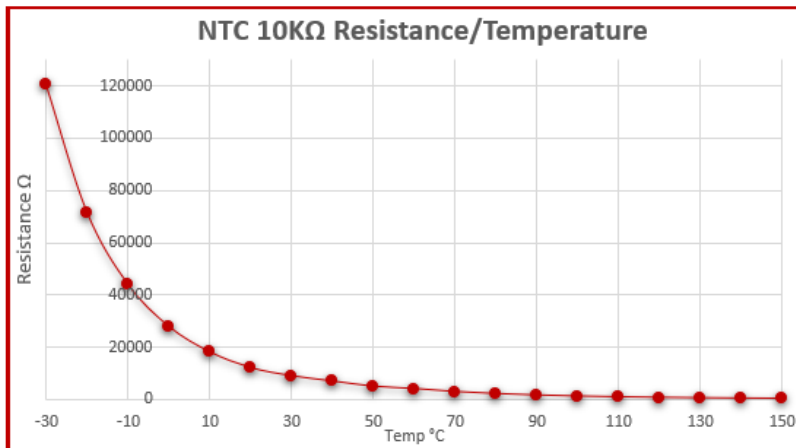
	NTC 10K Ω	PT1000
Temp $^{\circ}\text{C}$	Output Ω	Output Ω
-30	120370.00	882.20
-20	71668.00	921.60
-10	44087.00	960.90
0	27936.00	1000.00
10	18187.00	1039.00
20	12136.00	1077.90
25	10000.00	1097.30
30	8284.50	1116.70
40	5774.20	1155.40
50	4120.60	1194.00
60	2967.30	1232.40
70	2181.70	1270.80
80	1628.80	1309.00
90	1233.50	1347.10
100	946.59	1385.10
110	735.47	1422.90
120	578.10	1460.70
130	459.36	1498.30
140	368.75	1535.80
150	298.86	1573.30

*Sense
Analyse
Control*

Services for:

- Data Logging
- Telemetry
- Controls
- Wiring

NTC 10K Ω / PT1000 TEMPERATURE GRAPHS



Contact us

KA Sensors Ltd
Unit 13 Priest Court
Springfield Business Park
Grantham
United Kingdom
NG31 7FZ

bf1systems.com
sales@kasensors.com

ASLT
KA015P-DS (rev1)